

General notes:

- Contractor shall verify all existing field conditions and notify architect immediately if that which exists differs from that which is shown on drawings.
- All work to comply with current Federal, State and Local codes, laws and ordinances. The requirements of ICC/ANSI A117.1 and the Americans with disabilities act (ADA) are to be fully satisfied. All work shall meet the most stringent requirements of both including, but not limited to clearances, limitations, accessories, etc.
- These drawings are prepared in accordance with the limited services for which the architect was contracted. The architect makes no representation that the interpretation of these documents will result in complete compliance with the ADA.
- All doors required to be labeled shall be set in labeled frames and identified with UL label and be provided with approved self-closing devices and positive latching hardware.
- All designated exit doors shall be equipped with the required egress hardware.
- Furnish hardware as scheduled without substitution, no alternates will be approved.
- Provide Cylinders, Combined IC Cores and keys; keyed to Master System. Include key conference and key system schedule. Furnish a keyed core and two cut keys for each locking device specified.
- Furnish and provide all necessary reinforcements, brackets, fasteners, spacers and fillers to provide a complete functioning opening.
- Provide complete shop drawings, submittals and cut sheets complying with DHI prescribed methods and vertical format double spaced hardware schedule.
- All access control modules, fobs and readers, to be furnished by Security Vender under a separate section. Line voltage, circuits, cable, conduits from above the ceiling down to door frames for low voltage access control wiring, and installation of power supplies for controllers and access control peripherals to be furnished and installed by electrical contractor

Hardware Set 1 – Classroom Lock [Lock / Unlock]

3	ea.	Butt Hinge BB81 4 1/2" x 4 1/2" NRP	26D PBB
1	ea.	Classroom Lock MR 148 BJSJ SF7L	32D PDQ
1	ea.	SPIC Final Cores – Match WSU Master Key System	26D WSU
1	ea.	Wall Stop 1407	26D Don Jo

Hardware Set 2 – Office Lock [Lock / Unlock]

3	ea.	Butt Hinge BB81 4 1/2" x 4 1/2" NRP	26D PBB
1	ea.	Office Lockset MR 181 ADA BJSJ SF7L	32D PDQ
1	ea.	SPIC Final Cores – Match WSU Master Key System	26D WSU
1	ea.	Wall Stop 1407	26D Don Jo

Hardware Set 3 – Push / Pull Bars x Push Bar [Always Unlocked] + Closers  
(Requires min. 4" stiles, 6" top rail and 10" bottom rail)

6	ea.	Butt Hinge 4B81 4 1/2" x 4 1/2" NRP	26D PBB
2	sets	Push / Pull 1157/147 x 4 134 Mount at loose ends	32D Don Jo
2	ea.	Closer 7101 BC EDA x DPPA-BS-NFB	689 PDQ
2	ea.	Wall Stop 1492	26D Don Jo

Hardware Set 4 – Pull Bars x MLR Panics [Access Control] + Closers  
(Requires min. 4" stiles, 6" top rail and 10" bottom rail)

6	ea.	Butt Hinge 4B81 4 1/2" x 4 1/2" NRP	26D PBB
2	ea.	Electric SVR Panics 6400V MLR	32D PDQ
1	ea.	Rim Cylinder Housing I5308 (I03)	26D PDQ
1	ea.	Pull Bar 1157 x 4 134 Mount at loose ends	32D Don Jo
2	ea.	Closer 7101 BC EDA x DPPA-BS-NFB	689 PDQ
2	ea.	Power Transfer PTM-10	AL SDC
1	ea.	Power Supply 632RF	---- SDC
1	ea.	Access Control Module & Card Reader by Security Vender	---- Sec Vender
Note: Access control module, card reader and peripherals furnished by Security Vender.			
Coordinated by GC/CM.			

Hardware Set 5 – Push / Pull Bars x Push Bar [Always Unlocked] + Hold-Open Closers  
(Requires min. 4" stiles, 6" top rail and 10" bottom rail)

6	ea.	Butt Hinge 4B81 4 1/2" x 4 1/2" NRP	26D PBB
2	sets	Push / Pull 1157/147 x 4 134 Mount at loose ends	32D Don Jo
2	ea.	Push Bar 147	32D Don Jo
2	ea.	Hold-Open Closer 7101 BC EDAHO x DPPA-BS-NFB	689 PDQ
2	ea.	Wall Stop 1492	26D Don Jo

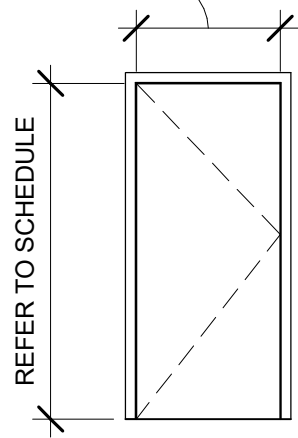
Hardware Set 6 – Exit Only Panics [Always Locked] + Closers  
(Requires min. 4" stiles, 6" top rail and 10" bottom rail)

6	ea.	Butt Hinge 4B51 4 1/2" x 4 1/2" NRP	32D PBB
2	ea.	Exit Only SVR Panics 6400V EO	32D PDQ
2	ea.	Closer 7101 BC SCS Stop x DPPA-BS-NFB	689 PDQ
1	ea.	Threshold S205A	AL Reese
2	ea.	Sweep 354A –Mount pull side	AL Reese
1	set	Weatherstrip by door and frame supplier	AL DFS

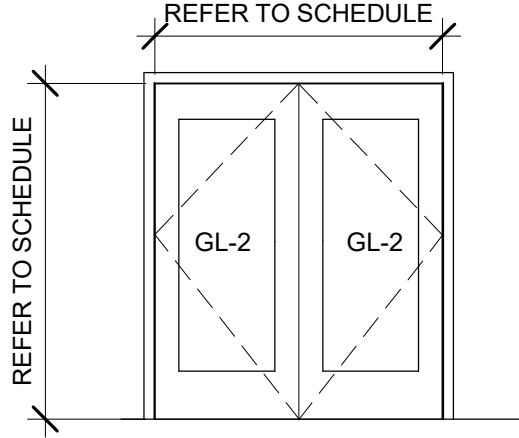
DOOR & FRAME SCHEDULE

NUMBER	ROOM NAME	DOOR SIZE		HDWE SET	DOOR				THRESHOLD TYPE	FRAME				FIRE RATING	DETAILS		REMARKS
		WIDTH	HEIGHT		TYPE	MATERIAL	FINISH	GLASS		MATERIAL	FINISH	GLASS					
													HEAD		JAMB		
Level 1																	
107.0	TE	3' - 0"	7' - 0"	1	F	WD	STN	-		ALUM	PFN	-	-	1/A900	2/A900		
108.0	DB	3' - 0"	7' - 0"	1	F	WD	STN	-		ALUM	PFN	-	-	1/A900	2/A900		
111.0	WR	3' - 0"	7' - 0"	1	F	WD	STN	-		ALUM	PFN	-	-	1/A900	2/A900		
112.0	HC OFFICE	3' - 0"	7' - 0"	2	F	WD	STN	-		ALUM	PFN	-	-	1/A900	2/A900		
115.0	QB/RB	3' - 0"	7' - 0"	1	F	WD	STN	-		ALUM	PFN	-	-	1/A900	2/A900		
119.0	LB	3' - 0"	7' - 0"	1	F	WD	STN	-		ALUM	PFN	-	-	1/A900	2/A900		
121.0	VIDEO	3' - 0"	7' - 0"	1	F	WD	STN	-		ALUM	PFN	-	-	1/A900	2/A900		
122.0	O LINE	3' - 0"	7' - 0"	1	F	WD	STN	-		ALUM	PFN	-	-	1/A900	2/A900		
123.0	GA OFFICE	3' - 0"	7' - 0"	2	F	WD	STN	-		ALUM	PFN	-	-	1/A900	2/A900		
124.0	D LINE	3' - 0"	7' - 0"	1	F	WD	STN	-		ALUM	PFN	-	-	1/A900	2/A900		
124.1	LOUNGE	6' - 0"	7' - 2"	3	GLS-2	ALUM	PFN	GL-2		ALUM	PFN	-	-	1/A900	2/A900		
124.2	VESTIBULE	6' - 0"	7' - 2"	4	GLS-2	ALUM	PFN	GL-2		ALUM	PFN	-	-	1/A900	2/A900	OUTFIT WITH EXISTING PEGASIS CARD SYSTEM	
126.0	CORRIDOR	6' - 0"	8' - 0"	3	F	HM	PTD	-		HM	PTD	-	45	1/A900	2/A900		
154.0	LOCKER ROOM	6' - 0"	7' - 2"	5	F	HM	PTD	-		HM	PTD	-	45	1/A900	2/A900		
154.1	LOCKER ROOM	6' - 0"	7' - 2"	5	F	HM	PTD	-		HM	PTD	-	45	1/A900	2/A900		
158.0	WEST LOBBY	6' - 0"	7' - 2"	6	GLS-2	ALUM	PFN	GL-2		ALUM	PFN	-	-	1/A900	2/A900		
158.1	WEST LOBBY	3' - 0"	7' - 2"	3	F	HM	PTD	-		HM	PTD	-	45	1/A900	2/A900		

REFER TO SCHEDULE



FLUSH DOOR



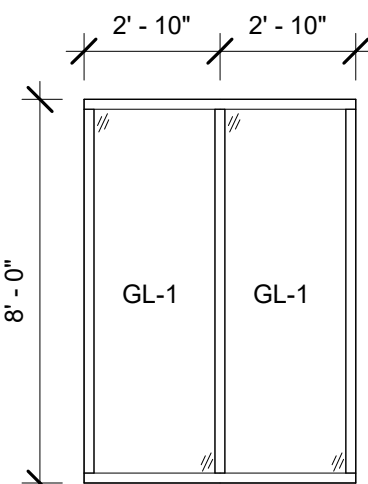
DOUBLE GLASS/ALUMINUM DOOR

GENERAL GLASS AND WINDOW NOTES

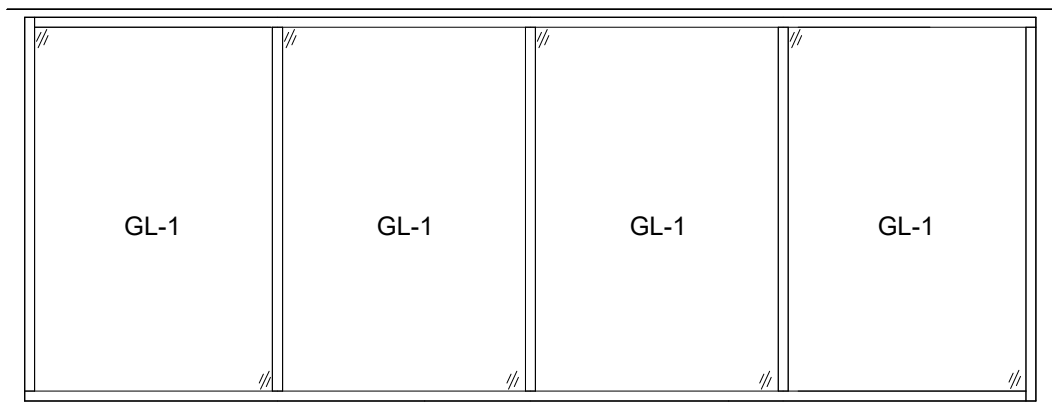
- REFER TO EXTERIOR ELEVATIONS & DETAILS FOR ADDITIONAL INFORMATION.
- ALL GLASS TO BE TEMPERED WHERE REQUIRED BY MBC.
- PROVIDE LAMINATED GLASS FOR ALL SAFETY GLASS, NO WIRE GLASS PERMITTED.
- PROVIDE FIRE-RATED CLEAR CERAMIC GLASS AT ALL REQUIRED LOCATIONS.
- WINDOW AND STOREFRONT FRAMING COMPONENTS SIZES, LAYOUT, AND SPACING SHOWN ON THE DRAWINGS ARE AESTHETIC MINIMUMS. THE FABRICATOR / CONTRACTOR SHALL AUGMENT THE DESIGN OF THE COMPONENTS AS REQUIRED TO MEET THE PERFORMANCE REQUIREMENTS SPECIFIED IN THE PROJECT SPECIFICATIONS AND/OR CODE REQUIREMENTS.

GLASS TYPES:

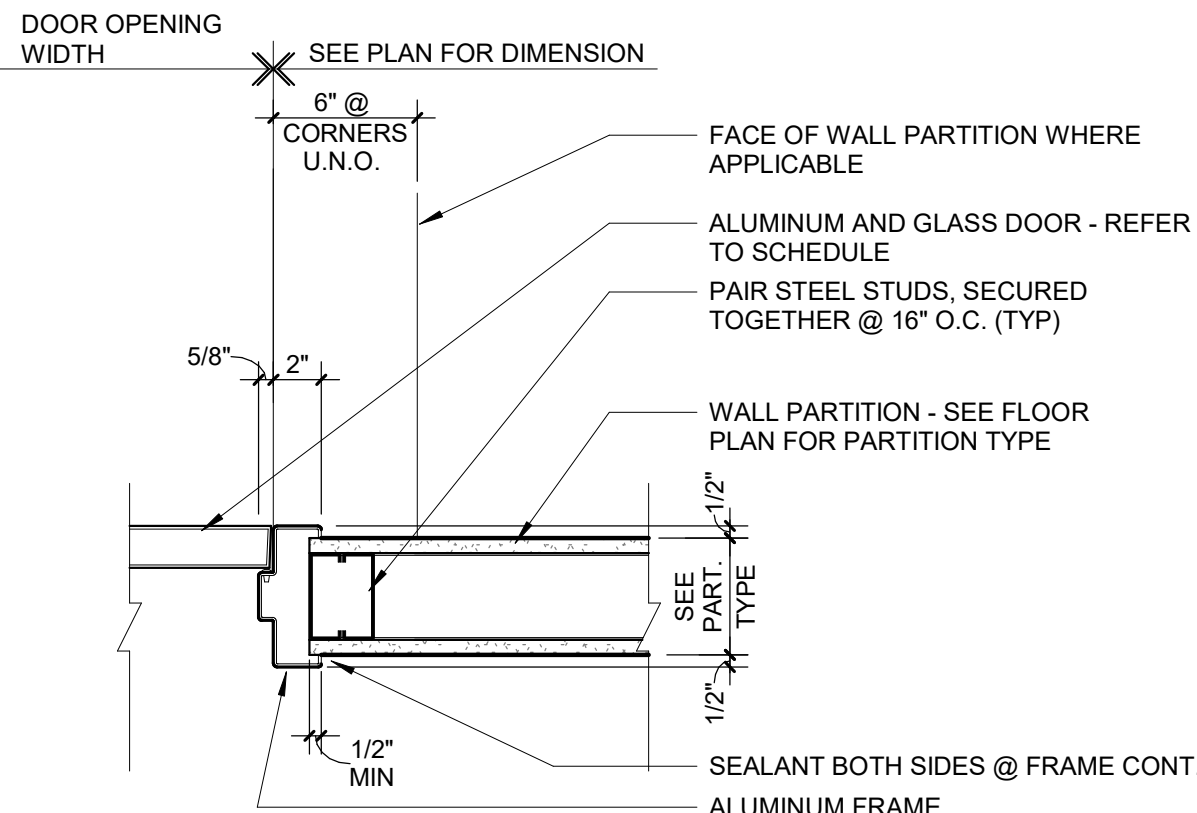
GL-1	1", LOW-E, INSULATED GLASS UNIT (IGU, TYP) MFR: VIRACON OR APPROVED EQUAL COLOR/STYLE: CLEAR
GL-2	3/4" OR 13/16" INSULATED GLASS UNIT (IGU, TYP) MFR: PER DOOR MANUF COLOR/STYLE: CLEAR



SF-2

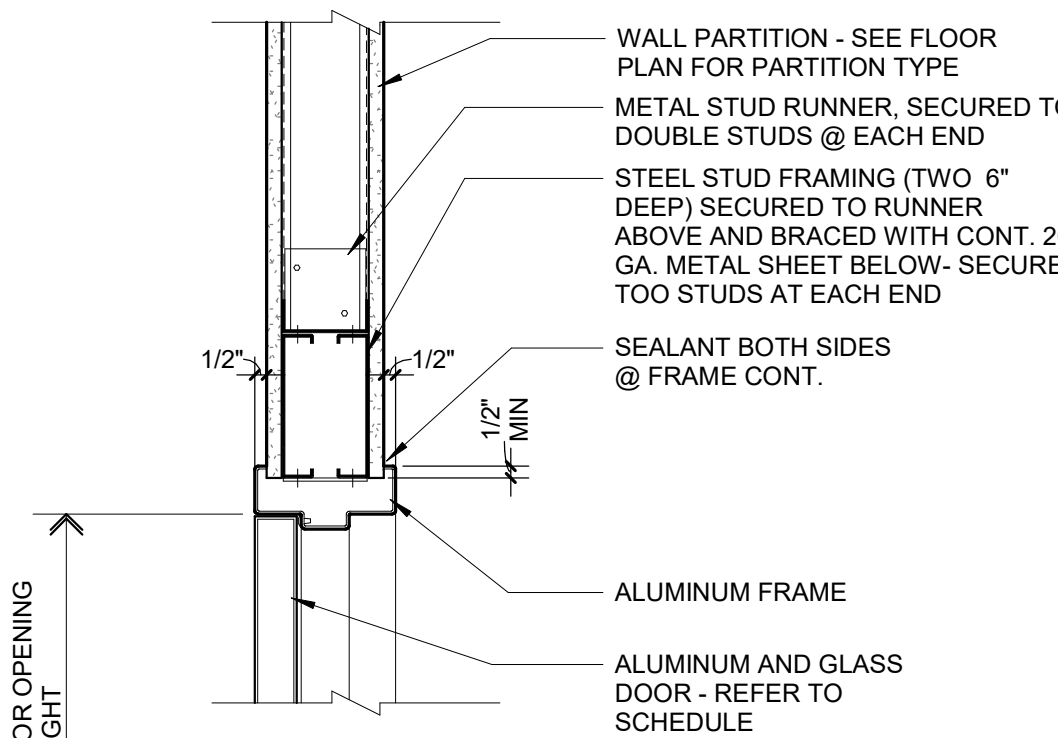


SF-1



JAMB AT TYPICAL STUD PARTITION

1 1/2" = 1'-0"



ALUMINUM HEAD AT STUD PARTITION DETAIL

1 1/2" = 1'-0"

WINDOW TYPES

1/4" = 1'-0"



STUCKY VITALE ARCHITECTS  
27172 WOODWARD AVENUE  
ROYAL OAK, MI 48067-0925  
P. 248.546.6700

F. 248.546.8454  
WWW.STUCKYVITALE.COM

STATEMENT OF INTELLECTUAL PROPERTY:  
THE IDEAS, CONCEPTS, DRAWINGS AND THOUGHTS CONVEYED HEREIN ARE THE INTELLECTUAL PROPERTY OF STUCKY VITALE ARCHITECTS. THIS SET OF DRAWINGS, IN WHOLE OR IN PART, MAY NOT BE REPRODUCED, WITHOUT THE WRITTEN CONSENT OF STUCKY VITALE ARCHITECTS. THIS INFORMATION IS PROTECTED UNDER U.S. COPYRIGHT LAW, ALL RIGHTS RESERVED.

Consultants

Seal:

Project :

WSU FOOTBALL  
LOCKER ROOM  
RENOVATION

1401 Ford Pl  
Detroit, MI 48208

Key Plan:



Issued for

50% CD	01.31.25
CONSTRUCTION	03.04.25
ADDENDUM #2	03.31.25

Drawn by :

JML

Checked by :

ARR

Sheet Title :

DOOR SCHEDULE AND DETAILS

Project No. :

2023.175

Sheet No. :

A900