

3/4" WOOD SLAT WALL PANELING
WITH ACOUSTIC FELT

5/8" TYPE "X" FIRE RATED GYPSUM BOARD
MECHANICALLY FASTENED TO METAL
STUDS.

ALUMINUM CHAIR RAIL CHANNEL - CHU-3147:
12ft LENGTHS - 1/2" LEG X 3" OD (2 3/4" ID) x 1/8" WALL
COLOR "ANODIZED BLACK" FINISH,
(eagle-aluminum.com) EAGLE-ALUMINUM
OR APPROVED EQUAL.

CONTACT INFORMATION:

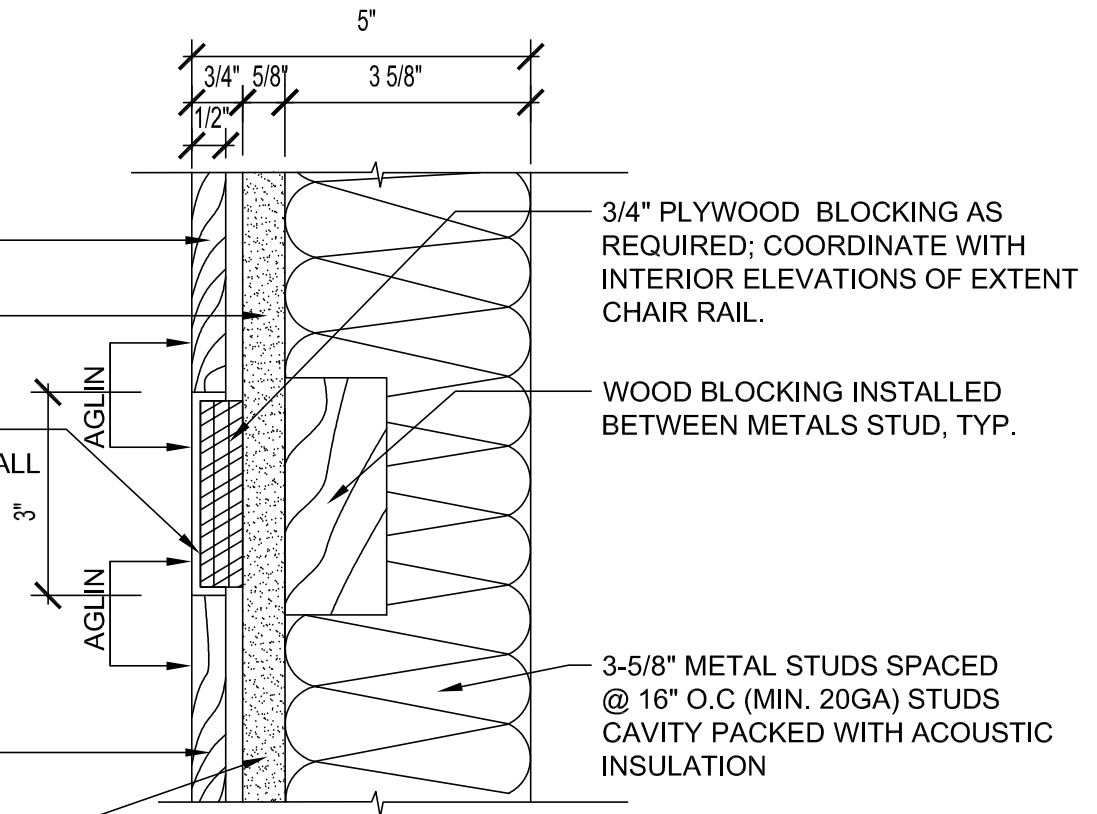
Sammy Lien

samantha@eagle-aluminum.com

800-888-2044, ext1924

3/4" WOOD SLAT WALL PANELING
WITH ACOUSTIC FELT

5/8" TYPE "X" FIRE RATED GYPSUM BOARD
MECHANICALLY FASTENED TO METAL STUDS.



NORR

Project Name: College of Nursing Renovation

Project Number: ED2024-0063

Sketch Number: SK-01-A60-01-ADD03

Date: 2024 08 05

Issue For: ADDENDUM-03