

WAYNE STATE UNIVERSITY FP&M



Thompson Home New Student Housing

WAYNE STATE PROJECT NO. 504-277444

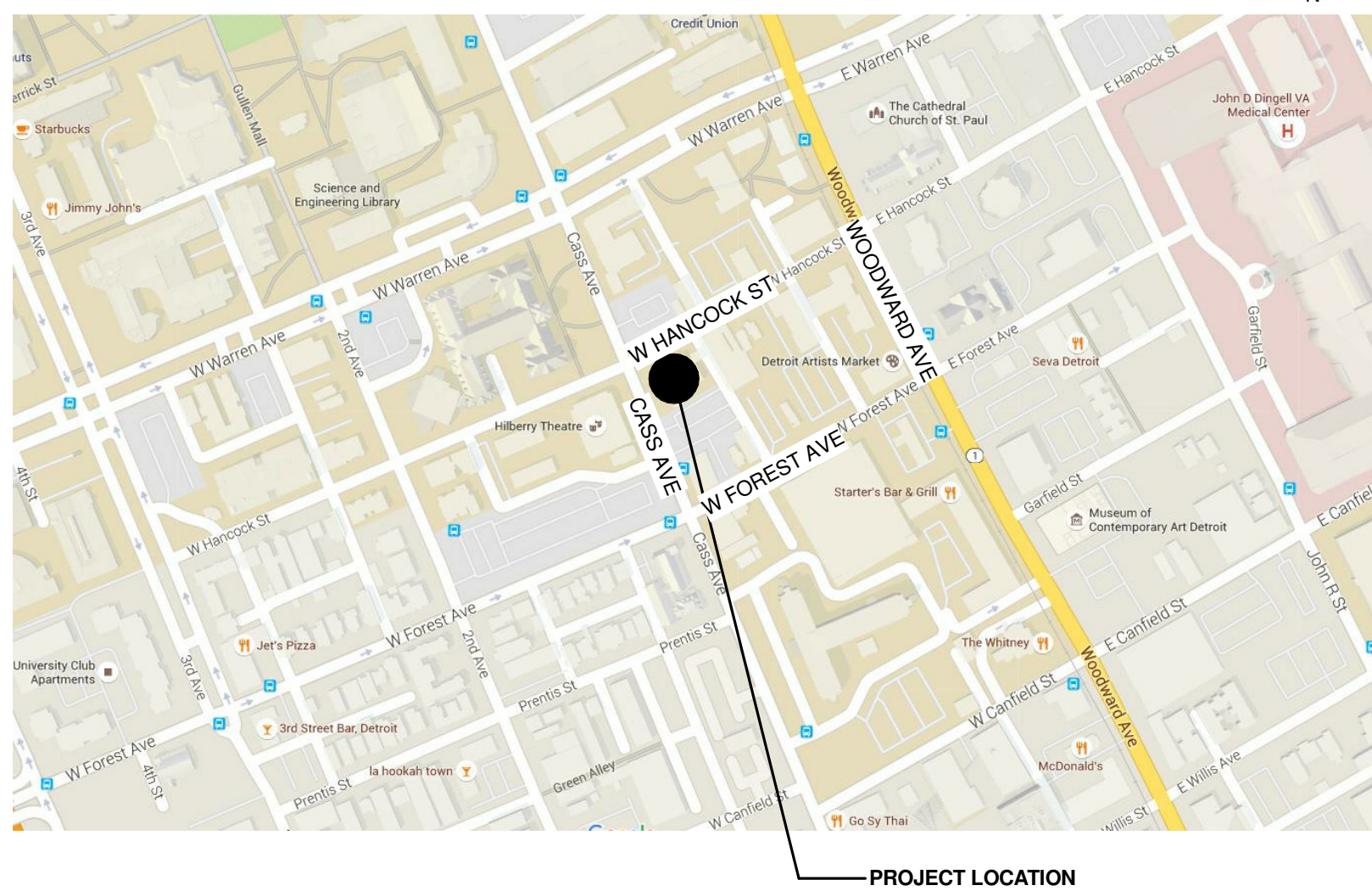
4756 Cass Ave, Detroit, MI
Furniture Packag12 AUG 2016017

HAMILTON ANDERSON PROJECT NUMBER: 2013088.08

HamiltonAnderson
architecture landscape architecture urban design

Hamilton Anderson Associates, Inc
1435 Randolph Suite 200
Detroit, Michigan 48226
p 313 964 0270 f 313 964 0170
www.hamilton-anderson.com

LOCATION MAP:



PROJECT CONTACTS:

OWNER:

Wayne State University FP&M
5454 Cass Ave
Detroit, MI 48202
p 313 577 7665

ELECTRICAL ENGINEER:

Strategic Energy Solutions
4000 West Eleven Mile Road
Berkley, MI 48072
p 248 399 1900

ARCHITECT/LANDSCAPE ARCHITECT:

Hamilton Anderson Associates, Inc.
1435 Randolph Suite 200
Detroit, MI 48226
p 313 964 0270
www.hamilton-anderson.com

MECHANICAL ENGINEER:

Strategic Energy Solutions
4000 West Eleven Mile Road
Berkley, MI 48072
p 248 399 1900

CIVIL ENGINEER:

Giffels Webster
28 W. Adams Street Suite 1200
Detroit, MI 48226
P 313 962 4442

SECURITY AND TELECOM:

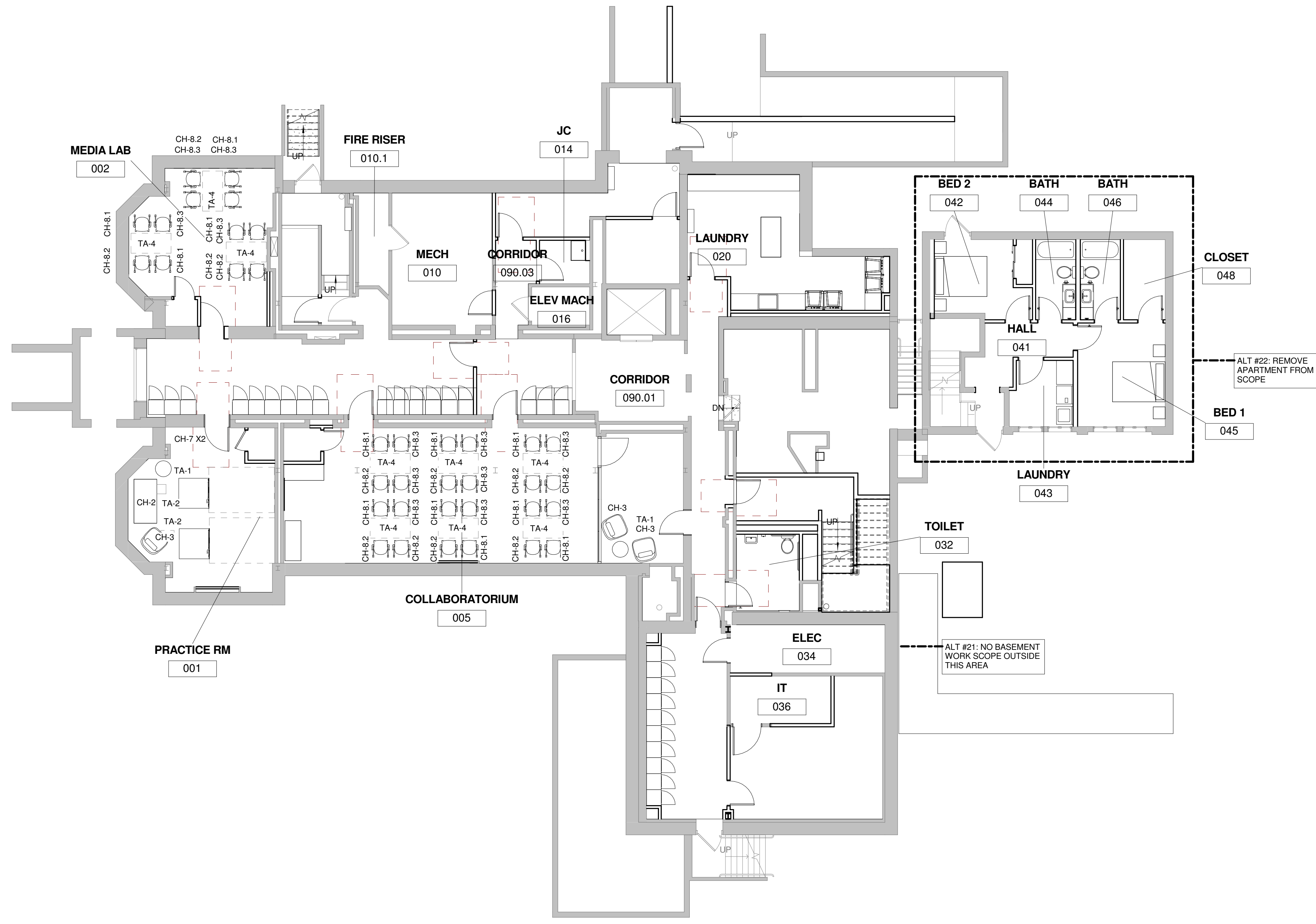
Commtech Design
6581 Belding Road NE Suite 101
Rockford, MI 49341
p 616 446 4545

STRUCTURAL ENGINEER:

Desai Naor Consulting Engineers
6765 Daly Road
West Bloomfield, MI 48322
p 248 932 2010

Civil Engineering	Giffels Webster 28 W. Adams Street Suite 1200 Detroit, MI 48226 P 313-962.4442
Structural Engineering	Desai Nasr Consulting Engineers 6765 Daly Road West Bloomfield, MI 48322 P 248-932-2010
Mechanical Engineering	Strategic Energy Solutions 4000 West Eleven Mile Road Berkley, MI 48072 P 248-399-1900
Electrical Engineering	Strategic Energy Solutions 4000 West Eleven Mile Road Berkley, MI 48072 P 248-399-1900
Security and Telecom	Commtech Design 6581 Belding Road NE Suite 101 Rockford, MI 49341 P 616-446-4545

Client
WAYNE STATE UNIVERSITY FP&M
5454 Cass Ave
Detroit, MI 48202



FURNITURE PACKAGE	21 JAN 2017
FOR BIDS	12 AUG 2016
95% CD OWNER REVIEW	27 JUN 2016
PERMITS	13 JUN 2016

Project
Thompson Home New Student Housing
WSU PROJECT NO. 504-277444
Drawing Title
BASEMENT FURNITURE PLAN

Project Number: 2013088.08
Drawn By: Designer Approved By: Checker
Scale: As indicated
Seal:

Signature: _____
Drawing No:

A7.7.5

BASEMENT - FURNITURE PLAN
1/8" = 1'-0"

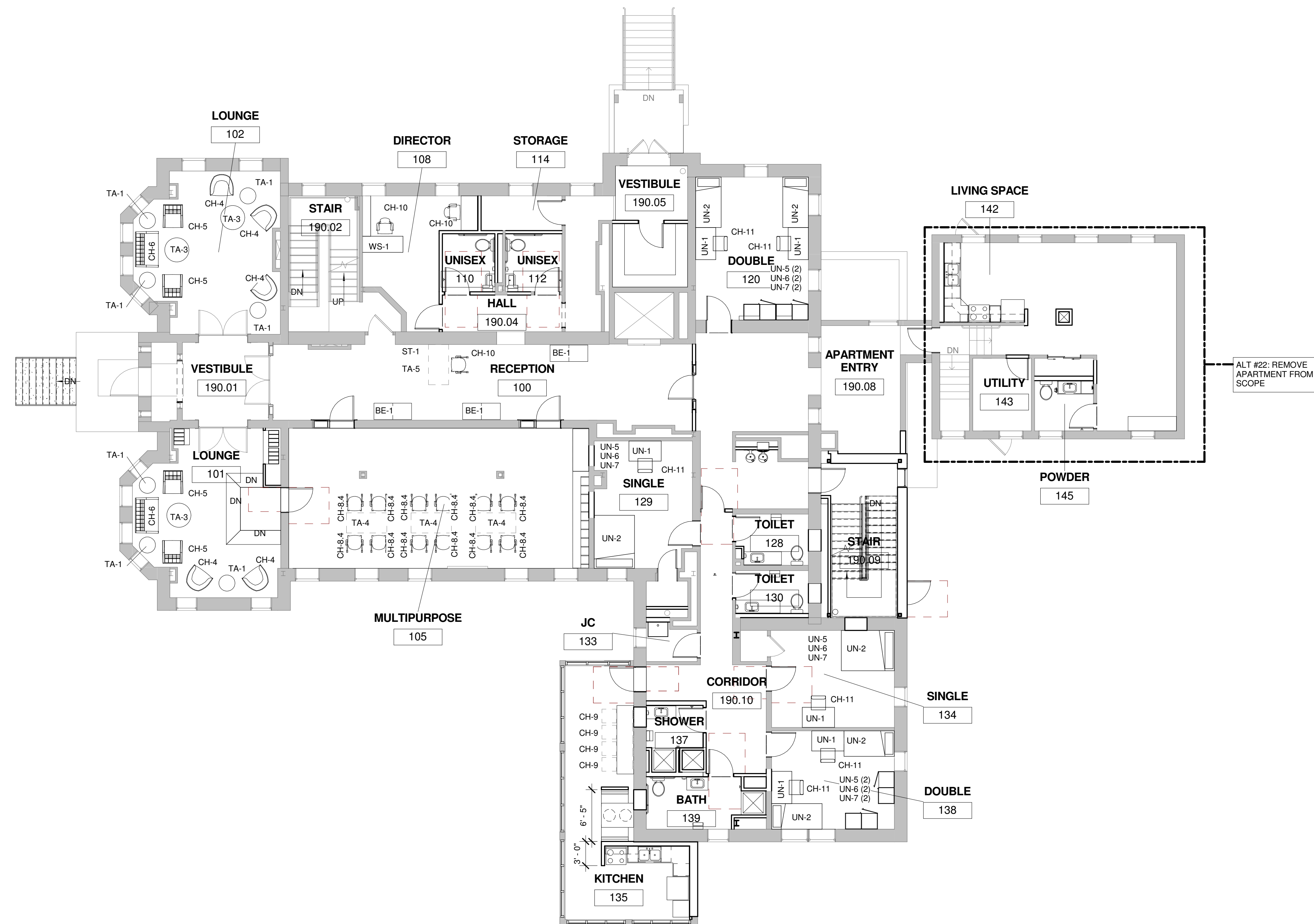
Hamilton Anderson Associates, Inc
1435 Randolph Suite 200
Detroit, Michigan 48226
p 313 964 0270 f 313 964 0170
www.hamilton-anderson.com

Civil Engineering	Giffels Webster 28 W. Adams Street Suite 1200 Detroit, MI 48226 P 313-962.4442
Structural Engineering	Desai Nasr Consulting Engineers 6765 Daly Road West Bloomfield, MI 48322 P 248-932-2010
Mechanical Engineering	Strategic Energy Solutions 4000 West Eleven Mile Road Berkley, MI 48072 P 248-399-1900
Electrical Engineering	Strategic Energy Solutions 4000 West Eleven Mile Road Berkley, MI 48072 P 248-399-1900
Security and Telecom	Commtech Design 6581 Belding Road NE Suite 101 Rockford, MI 49341 P 616-446-4545

Client
WAYNE STATE UNIVERSITY FP&M

5454 Cass Ave
Detroit, MI 48202

WAYNE STATE UNIVERSITY



FURNITURE PACKAGE	21 JAN 2017
FOR BIDS	12 AUG 2016
95% CD OWNER REVIEW	27 JUN 2016
PERMITS	13 JUN 2016

Project
Thompson Home New Student Housing
WSU PROJECT NO. 504-277444
Drawing Title
FIRST FLOOR FURNITURE PLAN

Project Number: 2013088.08
Drawn By: Designer Approved By: Checker
Scale: As indicated
Seal:

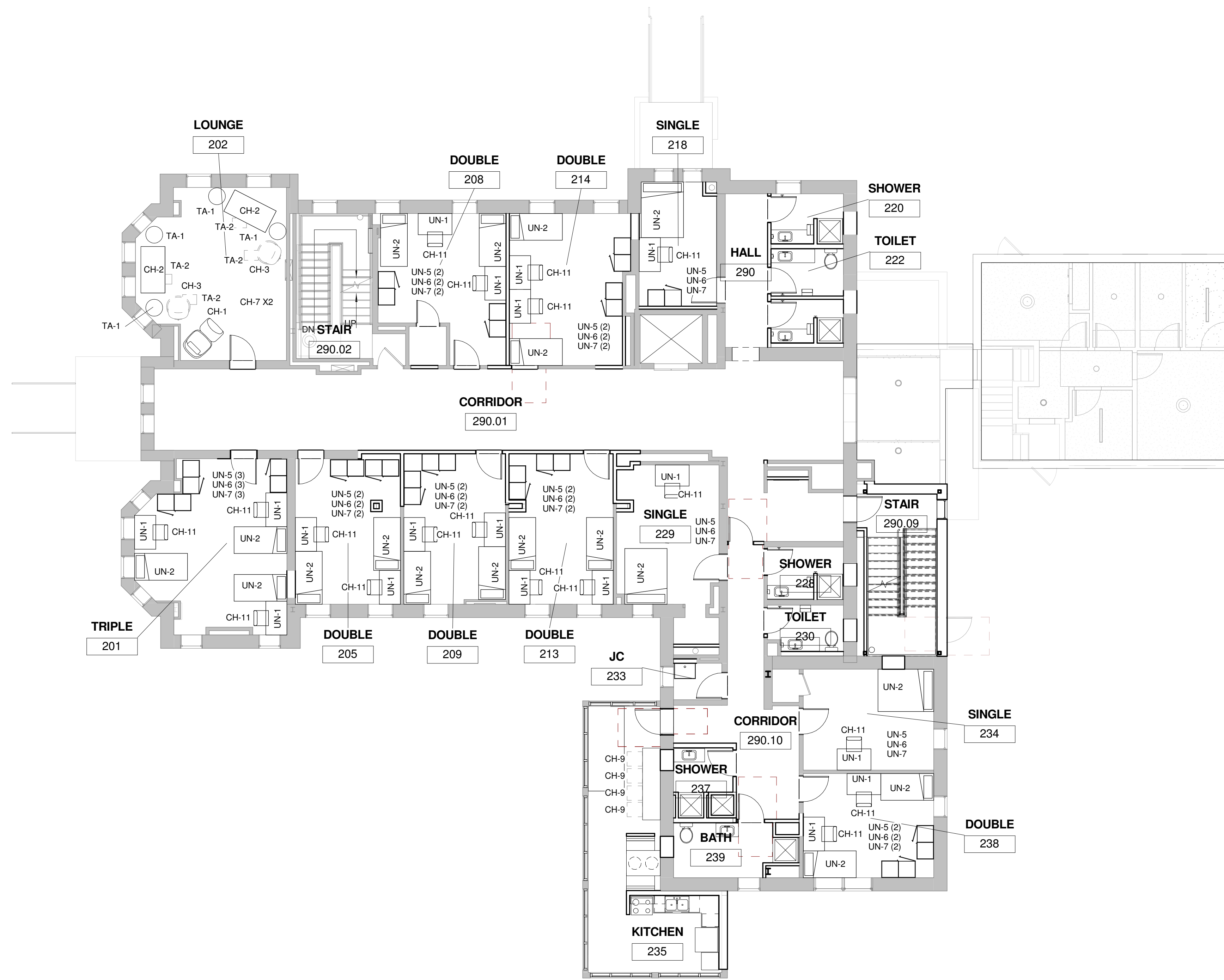
Signature: _____
Drawing No:

A7.7.6

FIRST FLOOR - FURNITURE PLAN
1/8" = 1'-0"

Civil Engineering	Giffels Webster 28 W. Adams Street Suite 1200 Detroit, MI 48226 P 313-962.4442
Structural Engineering	Desai Nasr Consulting Engineers 6765 Daly Road West Bloomfield, MI 48322 P 248-932-2010
Mechanical Engineering	Strategic Energy Solutions 4000 West Eleven Mile Road Berkley, MI 48072 P 248-399-1900
Electrical Engineering	Strategic Energy Solutions 4000 West Eleven Mile Road Berkley, MI 48072 P 248-399-1900
Security and Telecom	Commtech Design 6581 Belding Road NE Suite 101 Rockford, MI 49341 P 616-446-4545

Client
WAYNE STATE UNIVERSITY FP&M
5454 Cass Ave
Detroit, MI 48202



FURNITURE PACKAGE	21 JAN 2017
FOR BIDS	12 AUG 2016
95% CD OWNER REVIEW	27 JUN 2016
PERMITS	13 JUN 2016

Project
Thompson Home New Student Housing
WSU PROJECT NO. 504-277444
Drawing Title
SECOND FLOOR FURNITURE PLAN

Project Number: 2013088.08
Drawn By: Designer Approved By: Checker
Scale: As indicated
Seal:

Signature: _____
Drawing No:

A7.7.7

SECOND FLOOR - FURNITURE PLAN
1/8" = 1'-0"

